

# The Trumpet

A monthly publication of the people of the Episcopal Church of the Ascension, Cartersville, GA.



April 2011  
Volume 18, No. 4

## A MESSAGE FROM MOTHER MARY



Easter comes very late this year. It will become more and more apparent as the trees and flowers bloom into spring and yet, in the church, we continue to look at bare fig branches. I am grateful for the branch. Those who suggested it were also moved by it the first time they saw such a branch. It's a fine symbol of Lent to accompany our alleluia-less liturgy.

How does it speak to you? Can you identify with it? Does it lead you to consider what endures beneath the surface of your own life? Lent, the season that precedes Easter in the church calendar year, is an important time to consider the branches of your soul. Most of us spend way too much time focused on the periphery – on the flowers and leaves of life. But the season of Lent is a time to 'give up, let go, deny,' some things of the superficial nature in order that we might attend to the health and growth of our soul.

Ash Wednesday began with the symbol of our mortality: ashes on our forehead. At that service we were reminded of sin and death...two inescapable facts of human life. All life will end in physical death. Sin will sicken and strangle our souls even before physical death. We learned, however, that God's mercy and our repentance makes all the difference.

Lent I reinforced the message of Ash Wednesday. Humans sin. We are called to resist temptation to sin as Jesus did when he was in the wilderness. We need his help to resist sin and his forgiveness when we fail to resist.

Lent II was the story of Nicodemus. He came to Jesus by night. He was curious to know more about the signs that Jesus had given. Jesus told him "Very truly, I tell you, no one can see the kingdom of God without being born from above." We learned as Nicodemus did that there is more to life than what we see. The Spirit blows where it will.

Lent III brought us the story of the Samaritan woman at the well. Like Nicodemus, she had trouble understanding Jesus. Jesus asked for a drink from the well. She responded that he has no bucket and that the well is deep. Jesus wanted her to understand that there is another well...one that is even deeper...and eternally satisfying. "The water that I will give will become in them a spring of water gushing up to eternal life." He eventually convinced her that there is more to life. In her joy she brought others to him saying, "Come and see..."

Lent IV will include the story of the blind man who was able to see again after an encounter with Jesus (and a little mud and saliva). It's an invitation for us all to see again...to see ourselves and the world about us with the merciful and loving eyes of God.

Lent V will bring the story of Martha and Mary and Lazarus. It's the story of life after death. Once again the message has to do with something beyond this life. To follow Jesus is to experience new life regardless of the number of times we die (loss, suffering, and disappointment and the like) in this life.

Then will come the Passion of Palm Sunday. We will process with Jesus into Jerusalem as we proclaim Hosanna and wave our palms. Moments later all will read the Passion of our Lord and Savior. It's a shift that we all know and fear in our own lives: from life to death. The prayer for Palm Sunday asks "Mercifully grant that we may walk in the way of his suffering, and also share in his resurrection."

## FIRST SUNDAY LUNCH PLANNED

April 3 is the next First Sunday Lunch. That day is also Refreshment Sunday. What a great reason to invite friends and neighbors to Ascension and share in our Lenten tradition. The pot luck meal follows the 11 o'clock service. PLEASE BRING MORE SERVINGS THAN YOUR FAMILY SIZE. It is best to add 3-4 servings to insure there is enough to feed everyone who wants to attend. Last names beginning with **A-H**, please bring desserts. For names **I-M**, please bring main dishes such as fried chicken, casseroles, stews, sliced meats. Side dishes and salads are brought by last names **N-Z**. Bread and beverages will be provided by the parish.

If you have a spare hour on Saturday morning, April 2 around 10 AM, your assistance in setting up would be appreciated. Help will also be needed in clearing the room after the meal. If you can help, please contact Corinne at 404-403-9492 or [acscott333@comcast.net](mailto:acscott333@comcast.net).

## INSIDE

- Women's Retreat approaches
- Jim Haigler at ACH
- AIDS Alliance Walk/Run
- Outreach Needs
- A Heart for Lynette
- Stations Planned
- Hunger Walk Followup
- Healing Ministry
- ERD in Japan

continued

Maundy Thursday will bring the celebration of the last Supper and a reminder of what is important in Christian life. Good Friday will provide a powerful liturgy of loss and death, but it will not be the last word.

Finally, the Easter vigil will arrive with the the new light of Christ and Easter morning will bring us the story of the empty tomb. The lifeless branch at the altar will be replaced by beautiful flowers. We will learn anew that death is not the end of our story! Alleluia! There is life beyond sin and death. There is an eternity of new life in Jesus Christ and it begins now...today.! May our souls flower with beauty, joy, and peace and serve as a visible sign to all who seek new life in Jesus Christ. Alleluia! The Lord is Risen!

Mother Mary Erickson

#### **WOMEN'S RETREAT: APRIL 9TH**

**10:00am-4:00pm at the Evans Farm**

Our topic will be: "Discernment - how to listen for the voice of God".

This will be a day of rest and contemplation for the Women of

Ascension. For additional information and the sign-up sheet, please check the large display board the Parish Hall. **R.S.V.P.** Please sign-up so that we may have an estimate of how many are coming; any questions please call Earline Walpole at 770-607-3531, or email: [elwalpole44@bellsouth.net](mailto:elwalpole44@bellsouth.net)



#### **JIM HAIGLER TO PLAY FOR ASCENSION COFFEE HOUSE, FRIDAY, APRIL 8**



Local architect, Jim Haigler will be guest musician for the April 8th Ascension Coffee House. Jim has been involved in folk and bluegrass music since his college days at Georgia Tech in the 1960's. He has performed with several groups including Back Porch Revival that entertained in and around Cartersville for over 25 years. In recent years, Jim has become involved in

writing and performing his own original material. His style reflects the folk music background from his early experience as he blends humor and wit in some songs while others strike a more somber and melancholy tone.

Rick McKee continues as host musician. He was recently featured in a songwriter's showcase with Nashville songwriter, Marc-Allen Barnette. Rick is a music educator, multi-instrumentalist, composer, conductor, and singer-songwriter.



Donations for the Ascension Food Pantry are encouraged. (See the Outreach Ministry's list of needs in this newsletter.) All tips and donations collected benefit the rector's discretionary fund at Ascension. Many helping hands are needed to prepare food, and clean up. Contact Angee McKee at [amckee56@aol.com](mailto:amckee56@aol.com), if you would like to assist.

Hope you can join us for some great, live music on Friday, April 8th in the parish hall from 7:00-9:00 p.m. Invite your friends!

#### **PANCAKE SUPPER – HUGE SUCCESS**

The Pancake Supper held on March 8<sup>th</sup> in the parish hall was a huge success. The EYC had a great time flipping pancakes and serving the members of our parish. Due to generous donations above and beyond covering the expenses of the items purchased for the evening, the EYC raised approximately \$100.00. The participating EYC members have



voted to send the proceeds to the Episcopal Relief Fund set up to help the people of Japan who were affected by the recent earthquake and tsunami. Great Job!!

#### **ACOLYTE TRAINING**

Acolyte training takes place every Sunday after the 11:00 AM service. Thank you to Jamie Baker for her supervision. Please call her if you have questions or would like your child to be trained.

#### **WALK/RUN SCHEDULED TO BENEFIT AIDS ALLIANCE**

AIDS Alliance of Northwest Georgia will have its Third Annual AIDS Walk/Run at Dellinger Park on Saturday, April 30<sup>th</sup>. We are now pre-registering for teams and individuals. The registration fee is \$20 if you register early and \$25 on the day of the event. AIDS Alliance of Northwest Georgia has been serving people living with AIDS/HIV for over a decade. Please come out and support this worthy cause. Team registration is encouraged, and we do have many volunteer opportunities.



For more information please contact the office of the AIDS Alliance of Northwest Georgia at 770-606-0953.

#### **OUTREACH NEEDS AS SUMMER APPROACHES**

Thank you to everyone who has been so generous to the food pantry and the needs of our community. At this time we have enough personal toiletry items so please hold them until we ask again. There are a few special things that we could use. There is a need for small bottles of dishwashing detergent, individually wrapped rolls of toilet tissue, and single-wrapped rolls of paper towels. These items cannot be purchased with government allotments. The need for cat and dog food continues. Any assistance with these items would be greatly appreciated.

With summer approaching, the Outreach Committee would like to request some special items to help feed the children who will be home from school. As you shop pick up extra cereal, cereal bars, fruit rollups, peanut butter and jelly, and cookies. These items will help us give our patrons a little extra for the snacks that children need.



The Outreach Committee would like you to begin thinking about the annual Bane and Blessing Sale. This is a very important fundraiser for the Outreach ministry. If you have large items that you would like to donate and cannot hold them until collections begin after VBS this summer, please contact Marcia Humphreys or Chris McAbee. Thank you again for your continued support.

### CONGRATULATIONS TO...

Jamie and Dan Baker on the birth of their granddaughter, Sophia Lynn Tarczewski. Sophia was born Monday, March 14. She weighed 7lbs, 13oz. and is 19" long. She has her mother Sarah's curly hair, and her grandmother Jamie's floppy ear. Mother and baby are well.

### SYMPATHIES EXTENDED TO...

Barbara and Roseanne Bedrin on the death of Joe Bedrin on March 5. A graveside service was held March 9, 2011 in St. Petersburg, Fla.

### PRAYERS FOR HEALING...

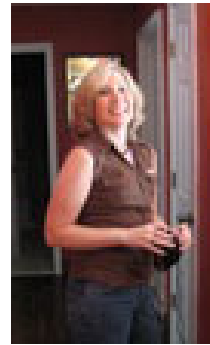
**For Healing—Long-term:** Ann, Johnny, Mary Ann, Alan, John, Warner, Bill, Carolyn, Katy, Linnie, Jim, John, Pete, Mim, Sally, Alice, Brad, Hope, Sam, Cindy, Robert, Lynn, Larry, Mary, Toni, Reed, Nancy, Ginny, Edward, Lorraine, Ron, Lillian, Michael, Philip, Anne, Tom, Butch, Debra, Matthew, Susan, Sybil, Lewis, Diane, Melanie, Bob, Melanie, Scott, Justine, Margaret, John, Jim, Andrew, Joan

**For Healing:** Britt, Coleen, Sidonie, Nicholas, Beth, Harvey, Melissa, Roland, Susie, Kelsey, Bonnie, Karen

**For Those who are Homebound:** Evelyn Fox, Bill Grate, Alma Schutz, Mike Kelly, Eleanor Arnold, Mary Fowler

**For Those Serving in Military:** Jake Caldwell, Kevin Jones, Micah Owens, Charles Patterson, Lewis Patterson, Michael Rountree, Gabriel Thorn, Lee West, Bill Sanders, Alex Blake, Christopher Briasco, Aaron Partlow, Rob Force, Elise Miller, Ulissa Miller, Jimmy Dean, Christopher Borst, Joel Askins, Janice Pecua, Caleb, Jason

### A HEART FOR LYNETTE



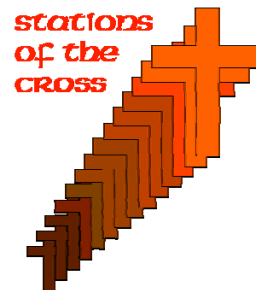
Lynette Pasek is a 41 year old disabled widow in need of a heart transplant. She is the daughter of Patricia Ashley, mother of Elizabeth Sanger, and grandmother of Anson Sanger, all members of the Church of the Ascension. Lynette has had severe congestive heart failure for



the past four years and is now faced with enormous annual costs in order to pay for all medical costs including post-transplant treatments.

A fundraising committee is working to help Lynette raise at least \$10,000.00 to cover these costs. They are working with Georgia Transplant Foundation. Lynette has an account with Georgia Transplant and they will match every dollar the committee raises up to a maximum of \$10,000.00.

Please consider making a donation to help Lynette reach her transplant goal. Checks/ money orders should be made payable to Georgia Transplant Foundation with Lynette's name in the memo section of the check. Please mail checks to the Georgia Transplant Foundation, Attention Transplant Fundraising Program, 6600 Peachtree Dunwoody Road, 600 Embassy Row, Suite 250, Atlanta, Georgia 30328. You can also donate online at <http://client.gatransplant.org/>. Thank you all for your support.



### STATIONS OF THE CROSS

On Wednesday, April 20<sup>th</sup>, please join us at 6:30 PM as we walk the Stations of the Cross. This service is for the whole family. The children have made the stations and will read at each station. Please join us as we learn to walk more closely with our Savior.

### MEN'S BREAKFAST ON APRIL 9TH

Come and join the men of Ascension as they enjoy fellowship over breakfast on Saturday, April 9<sup>th</sup>, at 9:00 AM. The breakfast is a feast of grits, eggs, bacon, and biscuits and gravy. Bring a male guest with you, but don't forget to call the church office to make your reservations. Breakfast is \$6 and would be a bargain at twice the price. Don't miss it!



### CALLING ALL ALTAR GUILD MEMBERS

All Altar Guild members are needed during the month of April. We will meet at 9:00 AM on Saturday, April 16<sup>th</sup> and Saturday, April 23<sup>rd</sup>. The first Saturday we will be preparing for Palm Sunday and then for the Great Vigil on Holy Saturday on the second Saturday. There is much work to do, so please, all hands on deck!

### *Happy Birthday to...*

- 3 Jessica Kubat*
- 4 Alex Dial*
- 5 Don Evans Jr.*
- 9 Mitchell Bolton*
- 9 Stephen Hamilton*
- 10 Marilyn Greer*
- 16 Steve Erickson*
- 16 Meghann Humphreys*
- 16 James Gnann*
- 19 Paul Wilson*
- 26 Bev McGruder*
- 30 Maryanne Gordy*
- 30 Clive Smart*
- 30 Dawson Horah*

### *Happy Anniversary to...*

- 1 Marty and Bill Barber*
- 12 Donna Marie and Erle Newton, III*
- 21 Maryanne and Bob Gordy*

## HUNGER WALK

The Hunger Walk was Sunday, March 13<sup>th</sup>. It departed from Turner Field and continued on a 5K walk around downtown Atlanta and the Capitol. 16 walkers from Church of the Ascension raised more than \$500.00 for the Episcopal Charities Fund and Food Bank. The weather has never been so perfect for this walk. Please join us next year.



## HEALING MINISTRY

If you attend the 11:00 Eucharist, you might have noticed someone standing at the back altar at the rear of the church during Communion. This person is one of our three healing ministers – Julia Gilbert, Kathi White, and Nancy Zerbe.

Each Sunday the healing minister offers intercessory prayers for healing or thanksgiving at the 11:00 service. If you desire prayer for yourself or someone else, all that is necessary is for you to come to the back altar after you have received Communion. You may indicate a special request, but you do not have to be specific. Some people do not say anything. The healing minister will anoint you with oil and offer a prayer for healing or thanksgiving. Prayers remain confidential, but pastoral needs may be shared with the rector.

If you feel called to this ministry and would be interested in becoming a healing minister, please contact Kathi White or Mother Mary.

## EVANGELISM UPDATE

Church of the Ascension has now had a presence on Facebook for a month. During that time 95 people have “liked” our page, meaning they receive updates as they are posted on the page. These 95 people live anywhere from across the street from the church to halfway around the world. Our page can be viewed by anyone on Facebook, even if they have not “liked” the page. Over the past month posts on our page have been viewed 11,628 times. If you are a Facebook user, please “like” this page and then “share” it with your friends. The page provides a place for users to comment on our Parish and also allows us to share articles from the Trumpet, weekly bulletin and photos (with permission) of our Little Church with the Red Door.

	<i>HE CAN</i>	<i>When you are completely helpless, He is the most helpful.</i>	<i>When you are the most humble, He is most gracious.</i>	<i>When you are the most alone, He is intimately present.</i>
		<i>When you are the weakest, He is the most able.</i>	<i>When you are the neediest, He is the most sufficient.</i>	<i>When you feel the least secure, He is your Rock and Fortress.</i>
		<i>When you feel the most useless, He is preparing you.</i>	<i>When you feel totally dependent, He is absolutely dependable.</i>	<i>When you can't, He can.</i>
<i>Author, wise, but unknown.</i>				

## NEWS FROM BUILDINGS AND GROUNDS

Thank you to everyone who helped put in the double doors in the storage area at Ascension House. These should make storing our riding mower much easier. There was a lot of cleaning up and cleaning out that went on.

Thank you to Winnie and Bev McGruder for the gift of new chairs for the library area. They actually match and are not threatening to fall apart.

You may have noticed the large tree at the front edge of the parking lot has been cut down. It was deemed unsafe and removed before any problems could occur.



Thank you to everyone who is helping keep things in order and writing projects in the “To Do Book.” The Building and Grounds Committee is hard working and devoted to the upkeep of our beautiful church. Please pray that we have no new disasters and can actually make some progress with this aging facility.

## FINANCIAL NEWS AND NOTES

03/22/11

Our financial results for the month of February were not as good as last month primarily due to low collections on pledges. Some notes on the results:

- Pledge receipts fell short of budget by \$4,020.
- Expenses were under budget by \$1,338.
- Expenses exceeded revenue by \$3,518 (a net loss).
- Utilities continue to exceed budget but should level back to budget during the Spring.
- Our unrestricted cash balance at the end of the month was \$3,968 and our accounts payable were \$4,467.
- A small silver lining is that we are still essentially breakeven on the bottom line year-to-date. A major contributing factor to this breakeven status is the insurance reimbursement we received in January for the bathroom repairs expensed in December.
- We are unable to deposit any funds into the Vestry restricted savings account this month due to the current cash position.

All in all, it is not a bad financial picture for the first two months of the year. Breakeven at the end of February is a positive situation. I have seen it much worse. I had hoped we could make some deposit into the vestry savings account each month but that isn't possible when your bills owed exceed your cash balance. Joe White and I will continue to monitor the cash supply and requirements and make deposits whenever it is feasible to do so.

Mal Underwood

## EFFECTS OF JAPAN EARTHQUAKE AND TSUNAMI WIDESPREAD

March 14, 2011



Episcopal Relief & Development is supporting the rescue and relief efforts of the Nippon Sei Ko Kai (NSKK; the Anglican Communion in Japan)

following the 8.9-magnitude earthquake and resulting tsunami that struck Japan this past Friday. This quake was the strongest to hit the country since officials started keeping records over 100 years ago. It is estimated that at least 10,000 people have died as a result of the disaster, though it may be weeks or even months before an accurate tally can be reached. Shelters are accommodating 350,000 people who have become homeless. Of families who are still in their homes, 1.3 million were without power as of Monday morning, and 1.4 million were without running water. Adding to the crisis is the situation at the Fukushima nuclear plants, which has prompted the evacuation of more than 180,000 people. Local authorities are continuing to screen and treat people for radiation exposure.

Prime Minister Naoto Kan told a news conference in Tokyo late Sunday: "I think that the earthquake, tsunami and the situation at our nuclear reactors makes up the worst crisis in the 65 years since the war. If the nation works together, we will overcome."

Damage to transportation and communication infrastructure has made information collection difficult, so the full scope of the disaster is not yet known. It was two days before the bishop of the most severely affected diocese, the Rt. Rev John Hiromichi Kato of the Diocese of Tohoku, was able to communicate with provincial leadership, and he himself had not been able to find out much about the other churches in the diocese.

"There is particular concern for two churches," reported Archbishop Nathaniel Makoto Uematsu, who spoke with Bishop Kato. "Isoyama St. Peter's Church in Fukushima Prefecture and Kamaishi Shinai Church and the kindergarten in Iwate [were] close to the sea. Priests have been frantically trying to confirm that their parishioners are safe." The Archbishop went on to explain that churches in the Kita Kanto diocese had also been affected, and that the Sendai Christchurch Cathedral had been badly damaged.

Donations to Episcopal Relief & Development's Japan Earthquake Response Fund will provide vital support to the NSKK. In Tohoku, the Church is planning to establish an emergency relief center at the diocesan building, with Bishop Kato leading the efforts to respond to the crisis. At the Provincial level, Archbishop Uematsu is working to develop a response structure that is capable of dealing with a disaster of this magnitude, and will include organizing and supporting a network of volunteers to carry out the relief and restoration work.

After the emergency phase, Episcopal Relief & Development will continue to support the restoration and rehabilitation of affected areas in Japan. The agency will be liaising with other Anglican and international bodies, sharing information and working to ensure that the overall response

is coordinated and follows the vision of the NSKK. Episcopal Relief & Development has collaborated with the NSKK in the past, through broader regional partnerships to address climate change, peace-building and humanitarian initiatives.

Outside Japan, the impact of the tsunami is widespread. Churches and partners around the Pacific region have been affected, including those in Hawai'i and on the west coast of the US. Episcopal Relief & Development has been in contact with affected dioceses and is standing by to offer assistance.

For before and after satellite views, go to <http://www.nytimes.com/interactive/2011/03/13/world/asia/satellite-photos-japan-before-and-after-tsunami.html>.

The devastation is unbelievable. Please give generously.

### **PRAYER LISTS: TRYING SOMETHING NEW IN JUNE**

Since arriving to Church of the Ascension, one of the frequent comments I have heard from people is a desire for full names to be read during the Prayers of the People. We have discussed this request in the worship committee. Requests to keep the list current were also made known. After some review and discussion we decided to continue the tradition of having a current list and a long term list of people for whom we pray with the following changes:

#### **Current List to be read during the Prayers of the People**

- When you have someone you wish to pray for during the Prayers of the People, call Helen Lesser at 770 382-2626 or email her at [parishadmin@ascensioncartersville.org](mailto:parishadmin@ascensioncartersville.org)
- Helen will record your loved one's name. She will want to know if you wish to have the full name (or first name) of the person recorded. Additional pastoral information for the Rector and the date you called will also be requested.
- Your loved one's name will be read during the Prayers of the People for one month (unless you call to remove it sooner) and then removed. The list will be maintained in the weekly bulletin but not in the Trumpet due to concerns for confidentiality.
- At the end of the four weeks you may call and place the name on the "current" list again or to have it placed on the "long term list."

#### **Long Term List for Private Prayers of the congregation**

- A long term prayer list will be maintained for those who wish to have loved one's prayed for by our congregation in their private prayers, and on the occasions when we say them aloud at the Prayers of the People (as we have done during Lent).
- As previously described, please provide Helen with the information. Remember to specify full name or first name only.
- Your loved one's name will be placed on this list for six months.
- At the end of six months you have the option to call and place your loved one's name on either of these lists again.

I hope you find this protocol responsive and effective. I want to highlight that it is a "working protocol." It is not carved in stone and additional changes may need to be made given your feedback to us and our ability to manage the lists. Please call 770 382-2626 or email me at [merickson@ascensioncartersville.org](mailto:merickson@ascensioncartersville.org) with your comments and suggestions. Mother Mary Erickson

Church of the Ascension  
205 West Cherokee Avenue  
Cartersville, GA 30120  
Phone: 770.382.2626  
Fax: 770.382.2874  
www.ascensioncartersville.org



### **Just So You Know**

#### **What do the red shield shaped light covers above the altar represent?**

If you look closely you will see that the two red shield-shaped light covers above the altar are actually icons of the four apostles. It is not known when they were installed but have been fixtures for a very long time. A little research from Wikipedia about the symbols follows.

In iconography the evangelists often appear in Evangelist portraits derived from classical tradition, and are also frequently represented by the following symbols, which originate from the four "living creatures" that draw the throne-chariot of God, the Merkabah, in the vision in the Book of Ezekiel (Chapter 1) reflected in the Book of Revelation (4.6-9ff), though neither source links the creatures to the Evangelists. They are normally, but not invariably, all shown with wings like angels. The meanings accruing to the symbols grew over centuries, and were fully expressed by Rabanus Maurus, who set out three layers of meaning for the beasts, as representing firstly the Evangelists, secondly the nature of Christ, and thirdly the virtues required of a Christian for salvation:

- Matthew the Evangelist, the author of the first gospel account is symbolized by a winged man, or angel. Matthew's gospel starts with Jesus' genealogy from Abraham; it represents Jesus' Incarnation, and so Christ's human nature. This signifies that Christians should use their reason for salvation.
- Mark the Evangelist, the author of the second gospel account is symbolized by a winged lion - a figure of courage and monarchy. Mark has John the Baptist preaching "like a lion roaring" at the beginning of his Gospel. It also represents Jesus' Resurrection (because lions were believed to sleep with open eyes, a comparison with Christ in the tomb), and Christ as king. This signifies that Christians should be courageous on the path of salvation.

- Luke the Evangelist, the author of the third gospel account (and the Acts of the Apostles) is symbolized by a winged ox or bull - a figure of sacrifice, service and strength. Luke's account begins with the duties of Zacharias in the temple; it represents Jesus' sacrifice in His Passion and Crucifixion, as well as Christ being High priest (this also represents Mary's obedience). The ox signifies that Christians should be prepared to sacrifice themselves in following Christ.
- John the Evangelist, the author of the fourth gospel account is symbolized by an eagle - a figure of the sky, and believed to be able to look straight into the sun. John starts with an eternal overview of Jesus the Logos and goes on to describe many things with a "higher" level than the other three (synoptic) gospels; it represents Jesus' Ascension, and Christ's divine nature. This represents that Christians should look on eternity without flinching as they journey towards their goal of union with God.

Each of the symbols is depicted with wings following the biblical sources first in Ezekiel 1-2, and in Revelation. The symbols are shown with, or in place of, the Evangelists in early medieval Gospel Books, and are the usual accompaniment to Christ in Majesty when portrayed during the same period, reflecting the vision in Revelations. They were presented as one of the most common motifs found on church portals and apses, as well as many other locations. When surrounding Christ, the figure of the man is usually at top left - above Christ's right hand, with the lion above Christ's left arm. Underneath the man is the ox and underneath the lion is the eagle. This both reflects the medieval idea of the order of "nobility" of nature of the beasts (man, lion, ox, eagle) and the text of Ezekiel 1.10. From the thirteenth century their use began to decline, as a new conception of Christ in Majesty, showing the wounds of the Passion, began to be used. Sometimes in Evangelist portraits they appear to dictate to the writing evangelist. All four evangelists are all Jesus's disciples.

**The Rev. Mary K. Erickson**, Rector  
**George Chesnut**, Organist and Choirmaster  
**Nancy Haight**, Vestry Clerk  
**Dan Baker**, Senior Warden  
**Carol Robson**, Junior Warden, Christian Ed.

**Brenda Worley**, Trumpet Editor available at [carl46@bellsouth.net](mailto:carl46@bellsouth.net)

**David Horah**, Vestry Member, Fellowship  
**Marcia Humphreys**, Vestry Member, Outreach  
**Keith Martin**, Vestry Member, Bldgs. & Grounds  
**Angee McKee**, Vestry Member, Liturgy & Worship

**Nancy Miller**, Vestry Member, Finance  
**Mason Rountree**, Vestry Member, Evangelism  
**Earline Walpole**, Vestry Member, Pastoral Care  
**John Youd**, Vestry Member, Stewardship

**Trumpet Deadline is the 15<sup>th</sup> of each month.**